

*Refrigerated Trailer  
Decedent Capacity Solution*

**Scimedico C19-Response**  
*Scimedico Solution Summary*



**SCIMEDICO**  
YOUR RESULTS TEAM

# Purpose of Document

- Adjust initial incidence response solution to provide site specific solution (layout enclosed) to provide reduced scope solution for decedent overflow management for 672 decedents at four locations
- Provide a capacity management solution deployable on five (5) days notice
- Expand freezer trailer capacity from 17-21 decedents on the floor of trailer to 56 decedents on racks



# Tractor Trailer Freezer Truck Challenges

- Limited decedent management privacy



- HAZARDOUS patient handling protocol



- Limited internal capacity of trailers



- Possibility of exposure to contagion during transfer



# Scimedico Mobile Morgue Retro Fit – Two Options

## Fixed Lift – Anteroom – Mobile Rack

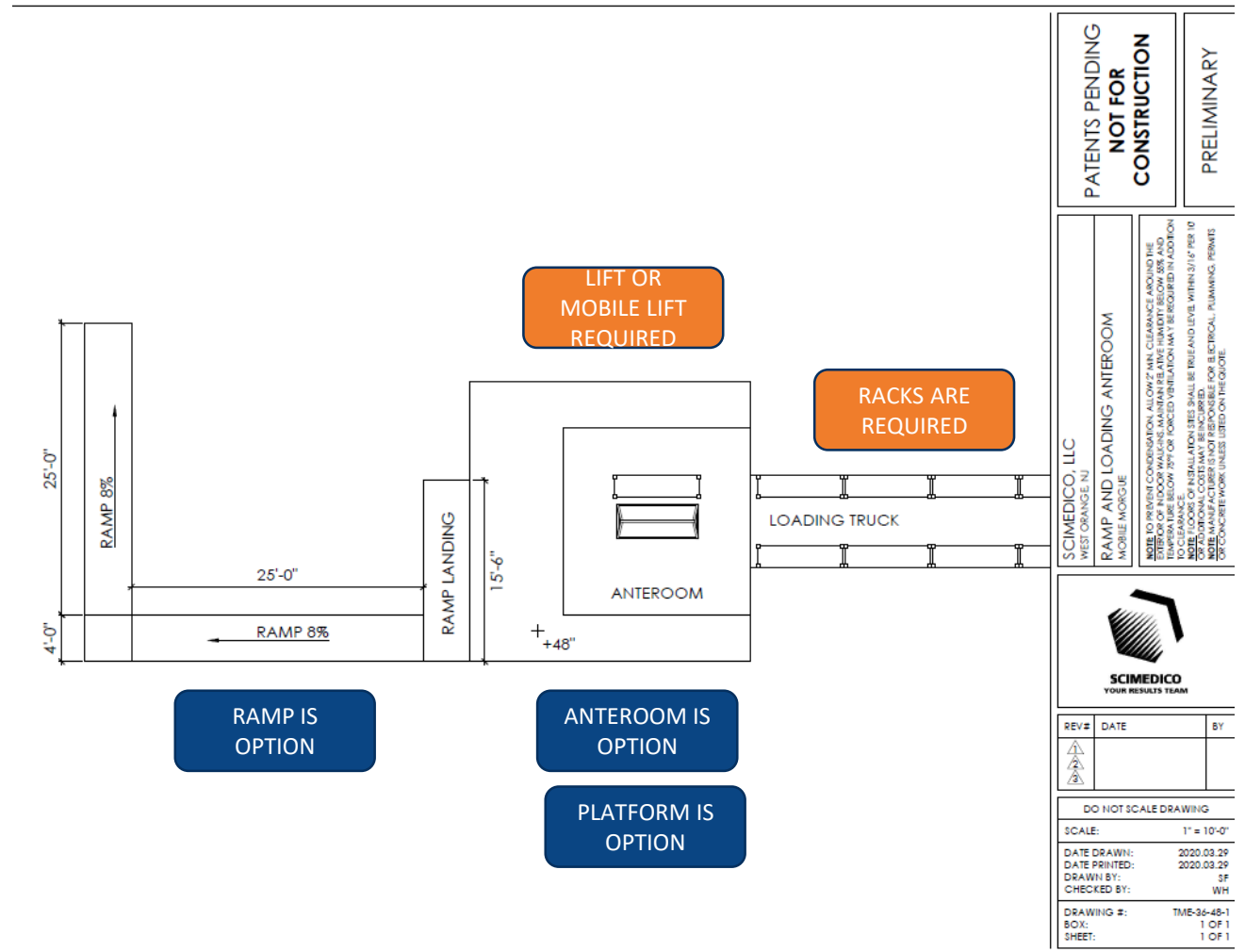
- Scimedico lift solution is installed in field installed anteroom
- Four tier mobile racks (on casters) are installed in decontaminated tractor trailer
- Four tier racks are mobile, are brought *into* ante room for decedent transfer using fixed position lift installed in anteroom
- Anteroom with rack can be installed at loading dock or provided

## Mobile Lift - Fixed Rack – Ante Room Optional

- Scimedico *mobile* lift solution is provided for us *inside tractor trailer*
- Four tier mobile fixed racks are installed in decontaminated tractor trailer
- Anteroom houses lift and provides location for decedent transfer from facility transfer cart to lift
- Decedent is transferred from lift to fixed racks within tractor trailer

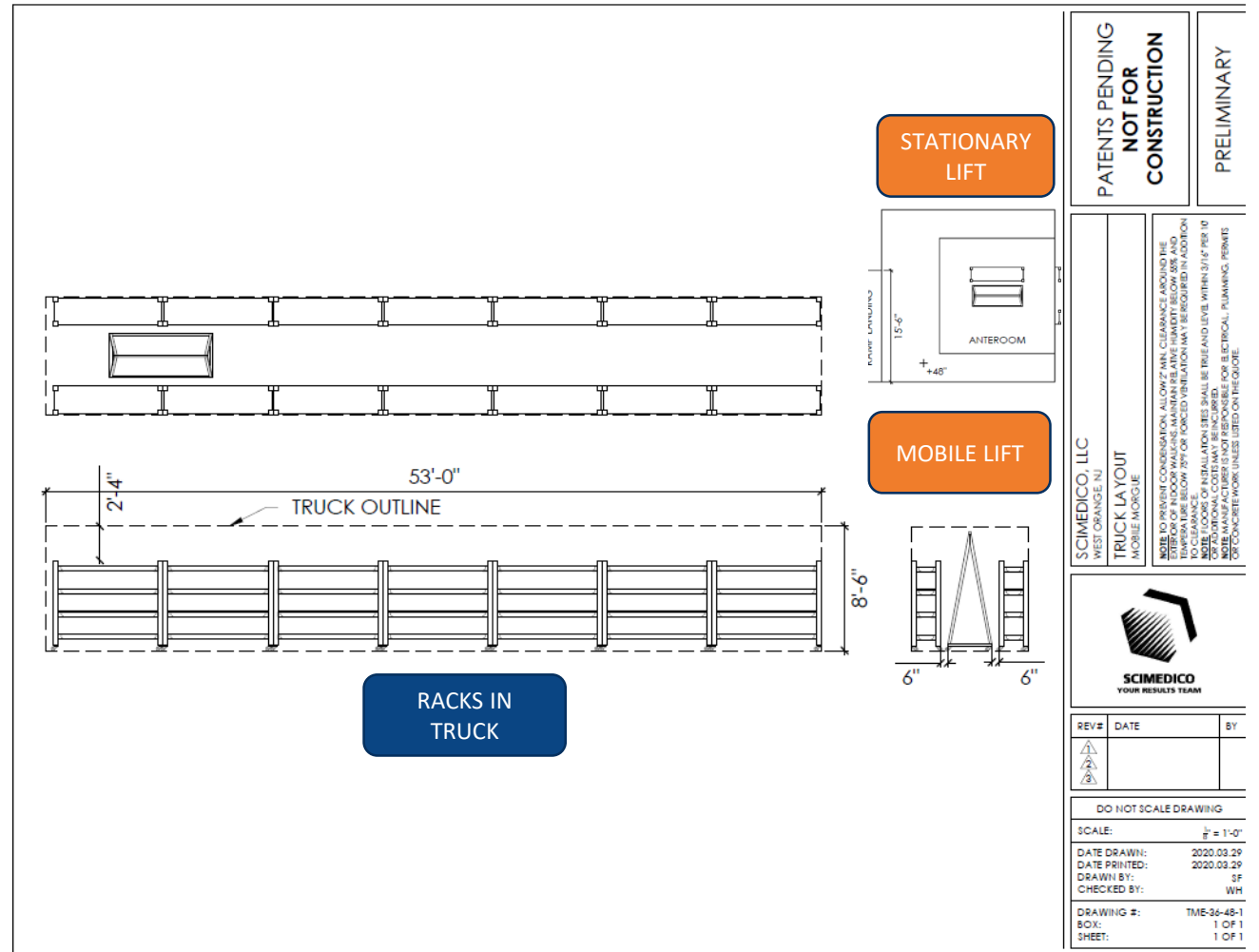
# Solution Walk Through: Capacity and Rack Options, Lift Options

- Optional OSHA Compliant Ramp can be installed in any configuration based on space
- Option Platform provides safe entry to into optional anteroom or direct entry to tractor trailer
- Anteroom provides a covered, discrete entry to tractor trailer
- Two lift options provide increased safety for decedent transfer:
  - Stationary Lift is used with mobile racks or custom fabricated lift for use with tractor trailer
  - Mobile lift is custom built to be used in tractor trailer with static Scimedico shelves or built in shelves



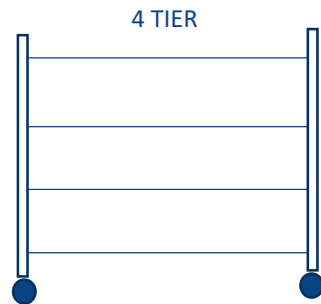
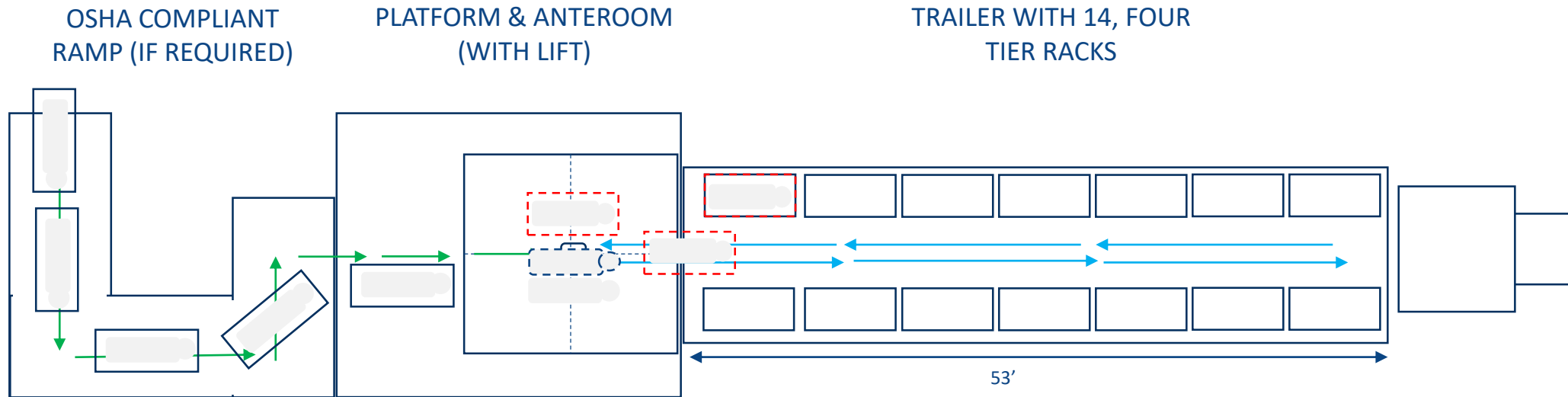
# Basic Solution Walk Through

- Two Rack Options: Racks are provided as stationary (no casters) or on casters
  - Mobile racks work with exterior lift – Scimedico lift is provided with Anteroom
  - Stationary racks function with mobile lift



# Mobile Morgue Retrofit – Option One

## Fixed Lift – Anteroom – Mobile Rack



1. RACKS ARE FOUR TIER
2. RACKS ARE CASTERS
3. TOTAL CAPACITY IS 300 PER TIER
4. TOTAL CAPACITY PER TRAILER IS 42 WITH THREE TIER
5. TOTAL CAPACITY PER TRAILER IS 56 WITH FOUR TIER
6. LIFT IS LOCATED IN ANTEROOM
7. CARTS ARE BROUGHT TO ANTEROOM FOR DECEDENT TRANSFER
8. RAMP CONFIGURATIONS WILL VARY BASED ON FIELD CONDITIONS
9. RACKS: 23" TRAY x 4 TIERS. 7'6"L x 24"W x 5'.2" H. 14.5" BETWEEN RACKS.

# Mobile Morgue Retrofit – Option One – Mobile Rack

## Equipment Summary

- 14 mobile four tier decedent racks
- Anteroom with fixed rack mounted in anteroom
- Optional platform for anteroom
- Optional OSHA compliant ramp

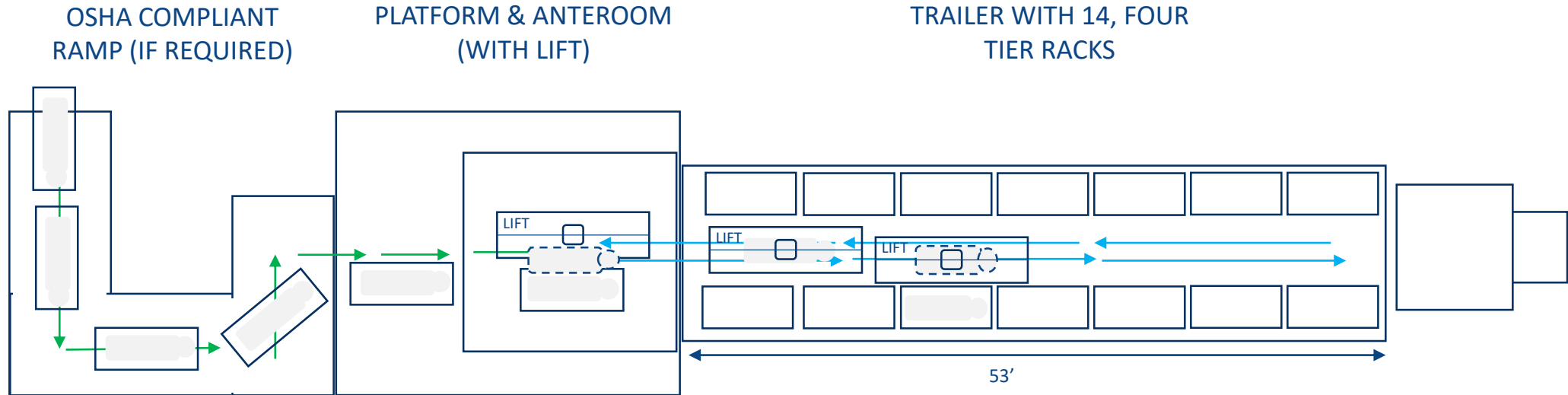
## Workflow

- Decedent is brought to anteroom
- Decedent is transferred from facility cart to anteroom lift
- Four tier mobile rack is brought to anteroom and decedent transferred to rack
- Rack is returned to position in tractor trailer

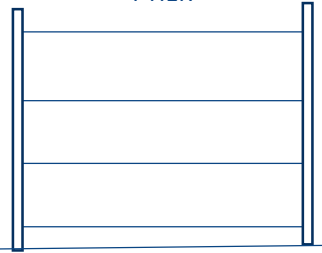


# Mobile Morgue Retrofit – Option Two

*Mobile Lift - Fixed Rack – Ante Room Optional*



4 TIER



1. RACKS ARE FOUR TIER
2. RACKS ARE FIXED
3. TOTAL CAPACITY IS 250 PER TIER
4. TOTAL CAPACITY PER TRAILER IS 42 WITH THREE TIER
5. TOTAL CAPACITY PER TRAILER IS 56 WITH FOUR TIER
6. LIFT IS LOCATED IN ANTEROOM
7. CARTS ARE BROUGHT TO ANTEROOM FOR DECEDENT TRANSFER
8. RAMP CONFIGURATIONS WILL VARY BASED ON FIELD CONDITIONS
9. RACKS: 23" TRAY x 4 TIERS. 7'6" L x 24" W x 5'.2" H. 14.5" BETWEEN RACKS.

# Mobile Morgue Retrofit – Option Two – Mobile Lift

## Equipment Summary

- 14 four tier decedent racks - fixed
- Anteroom (optional) with mobile lift
- Optional platform for anteroom
- Optional OSHA compliant ramp

## Workflow

- Decedent is brought to anteroom
- Decedent is transferred from facility cart to mobile lift
- Decedent is transported on lift to fixed racks in trailer
- Lift is returned to anteroom or storage area

# Next Steps

- Follow up with any questions
- Solution can be deployed in 5 days

Thank you.



**SCIMEDICO**  
YOUR RESULTS TEAM