

Scimedico HAZMAT C19-Response BSL
Conversion™ Solution - Incidence
Response

About the Scimedico C19 Response Solution Set



About the Scimedico C19-Response

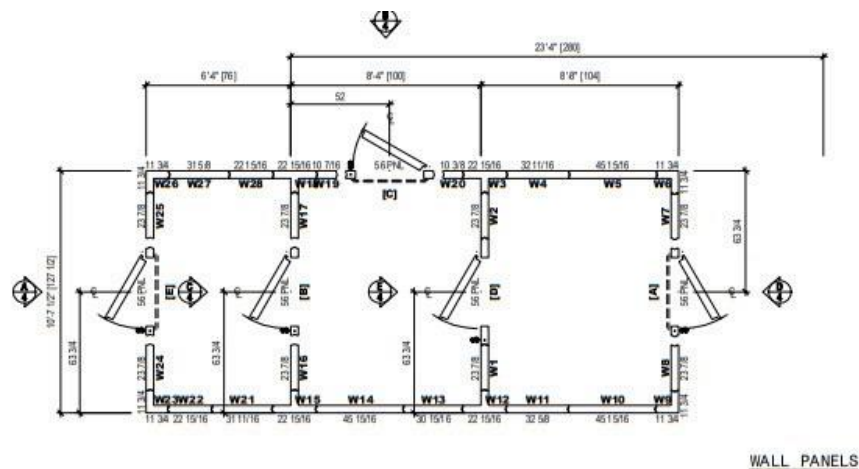
Scimedico Incidence Response provides solutions at appropriate scale for either a healthcare network or government agency. The Scimedico C19 Response solution set directly addresses COVID-19 with specific solutions.

Scimedico Temporary Patient Care options:

- **Temporary Patient Care**
 - *Scimedico C19-Response Temporary Patient Care™*
- **Temporary Environments – Morgue Solutions**
 - *Scimedico Temporary Morgue A-12-16™*
 - *Scimedico Temporary Morgue B-16-24™*

- Scimedico Temporary Morgue C-24-36™
- Scimedico Temporary Morgue C-36-48™
- NOTE: We also provide temporary autopsy and temporary lab environments
- **Laboratory Protection**
 - Scimedico HAZMAT C19-Response BSL Conversion™
- **Decontamination Services & Lab Protection**
 - Scimedico 2-6 Decontamination™ C19 Response•
 - Scimedico 4-12 Decontamination™ C19-Response
 - Scimedico 4-12 HAZMAT Laboratory C19-Response™•
- **Scimedico Back Up Environments**
 - We have a full set up of back up solutions based on our Temporary Environment solutions
- **Scimedico Preventive Maintenance**
 - Scimedico Preventive Maintenance - Scimedico PM services directly address staff safety, hygiene, and equipment function
- **End User Decontamination**
 - Scimedico PM Kit™ (with Scimedico 2X10X20 Methodology™)

Scimedico HAZMAT C19-Response BSL Conversion Incidence Response



Incidence Response

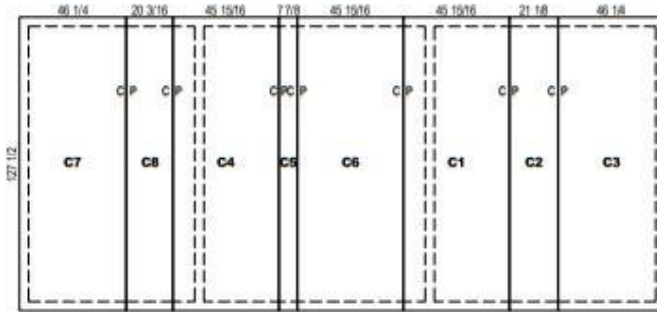
Scimedico provides emergency **C19 INCIDENCE RESPONSE** solutions for a healthcare network response to protect the clinical lab or lab across the entire network or at strategic locations in order to maximize lab hygiene.

All options include:

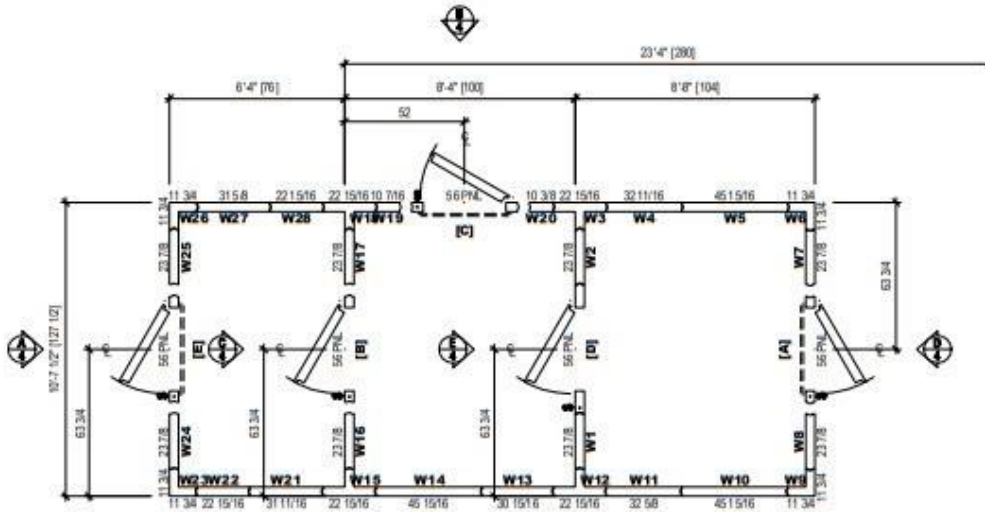
- BSL 2 protection installation
- Full installation
- Requires Cost Plus contracting

Scimedico can also provide this solution on an individual facility basis. **Scimedico C19 CLINICAL RESPONSE** provides scheduled or emergency deployment at a hospital facility location to provide additional patient rooms for transitional or recovery care capacity. Scimedico Temporary Patient Care offers clinical facilities scalable physical structures proximate to the hospital facility.

Scimedico HAZMAT C19-Response BSL Conversion Features



CEILING PANELS



WALL PANELS

Scimedico HAZMAT C19-Response BSL Conversion Features

The Scimedico HAZMAT C19-Response BSL Conversion provides laboratories with:

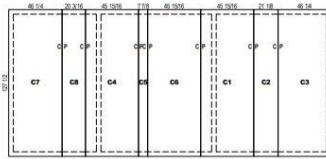
All installations include:

- Scimedico provides a Bio Safety Level 2 lab conversion solution that converts the clinical lab to a BSL 2 protocol to protect lab staff against outside infection - lab staff are a finite resources within any clinical service and must be protected. Includes entry way, locker room, changing room, and lab entry
- Can be deployed with or without alternate footwear
- Provides separate entry for specimen pass through into accessioning
- Utilizes existing HVAC and requires a single electrical circuit for unit lighting
- Includes appropriate features for staff personal effects and clothing as well as laundry container for removal of personal protection equipment
- Installation is turn-key including site review, utility runs, unit installation, commissioning, and training

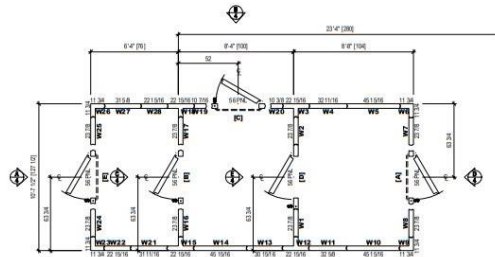
About Installation & Ongoing Support



GRS Reconstruction Services



CEILING PANELS



WALL PANELS

- Cost Plus deployment approach provides cost estimate with fixed cost items items as well as a cost plus contract addressing wrapped services
- Costs vary based on overall requirements, utility implementation specifications, and field conditions

For a quote or to contact your account representative, please [CLICK HERE](#)



C19-Response