



# Scimedico HAZMAT C19-Response BSL Conversion™ Solution

## About the Scimedico C19 Response Solution Set



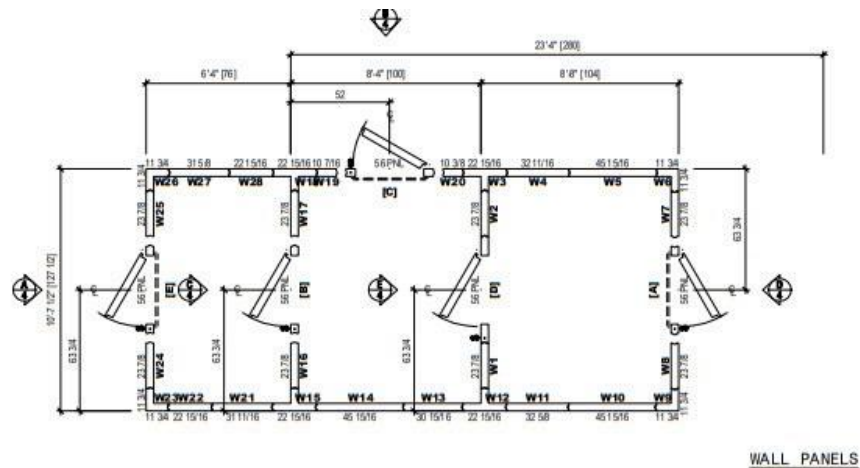
### **About the Scimedico C19-Response**

Scimedico is standing by to support both clinical facilities and governments with the appropriate solution to address COVID-19 requirements. Scimedico provides fully enabled Temporary Patient Care solutions, turn-key installation, and full site support.

- **Temporary Patient Care**
  - *Scimedico C19-Response Temporary Patient Care™*
- **Temporary Environments – Morgue Solutions**
  - *Scimedico Temporary Morgue A-12-16™*
  - *Scimedico Temporary Morgue B-16-24™*
  - *Scimedico Temporary Morgue C-24-36™*
  - *Scimedico Temporary Morgue C-36-48™*
  - *NOTE: We also provide temporary autopsy and temporary lab environments*

- **Laboratory Protection**
  - Scimedico HAZMAT C19-Response BSL Conversion™
- **Decontamination Services & Lab Protection**
  - Scimedico 2-6 Decontamination™ C19Response•
  - Scimedico 4-12 Decontamination™ C19-Response
  - Scimedico 4-12 HAZMAT Laboratory C19-Response™•
- **Scimedico Back Up Environments**
  - We have a full set up of back up solutions based on our Temporary Environment solutions
- **Scimedico Preventive Maintenance**
  - Scimedico Preventive Maintenance - Scimedico PM services directly address staff safety, hygiene, and equipment function
- **End User Decontamination**
  - Scimedico PM Kit™ (with Scimedico 2X10X20 Methodology™)

## Scimedico HAZMAT C19-Response BSL Conversion Options



### Clinical and Incidence Response Options

**Scimedico C19 CLINICAL RESPONSE** provides scheduled or emergency deployment at a hospital facility location to provide additional patient rooms for transitional or recovery care capacity. Scimedico

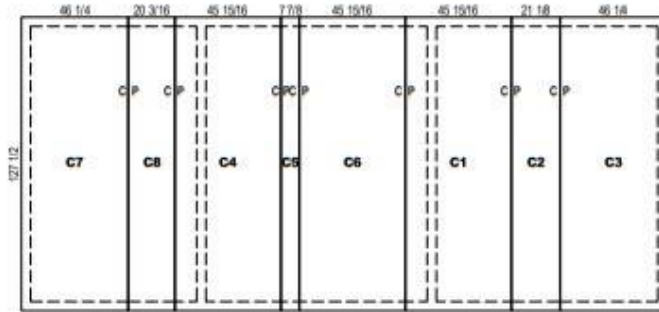
Temporary Patient Care offers clinical facilities scalable physical structures proximate to the hospital facility.

Scimedico provides emergency **C19 INCIDENCE RESPONSE** solutions for a healthcare network response to protect the clinical lab or lab across the entire network or at strategic locations in order to maximize lab hygiene.

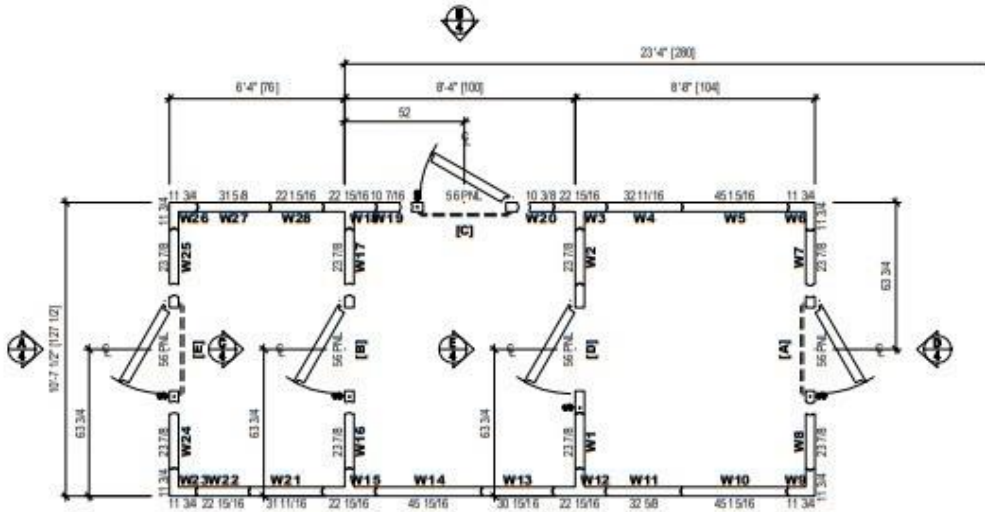
All options include:

- BSL 2 protection installation
- Full installation
- Requires Cost Plus contracting

# Scimedico HAZMAT C19-Response BSL Conversion Features



CEILING PANELS



WALL PANELS

## Scimedico HAZMAT C19-Response BSL Conversion Features

Scimedico is standing by to support both clinical facilities and governments with the appropriate solution to address COVID-19 requirements.

All installations include:

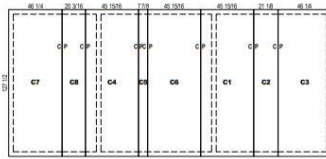
- Scimedico provides a Bio Safety Level 2 lab conversion solution that converts the clinical lab to a BSL 2 protocol to protect lab staff against outside infection - lab staff are a finite resources within any clinical service and must be protected. Includes entry way, locker room, changing room, and lab entry
- Can be deployed with or without alternate footwear
- Provides separate entry for specimen pass through into accessioning
- Utilizes existing HVAC and requires a single electrical circuit for unit lighting
- Includes appropriate features for staff personal effects and clothing as well as laundry container for removal of personal protection equipment
- Installation is turn-key including site review, utility runs, unit installation, commissioning, and training

## About Installation & Ongoing Support

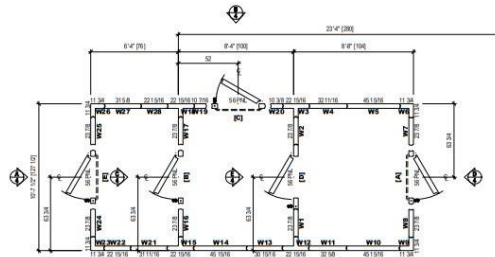


***GRS Reconstruction Services***





CEILING PANELS



WALL PANELS

- Cost Plus deployment approach provides cost estimate with fixed cost items items as well as a cost plus contract addressing wrapped services
- Costs vary based on overall requirements, utility implementation specifications, and field conditions



For a quote or to contact your account representative, please [CLICK HERE](#)



**C19-Response**